



PRAHA
PRAGUE
PRAGA
PRAG

WAKO K-1 EUROPEAN CUP 27. - 30. 9. 2017, Prague, CZ

PRIZE MONEY 24.000 €

MEN

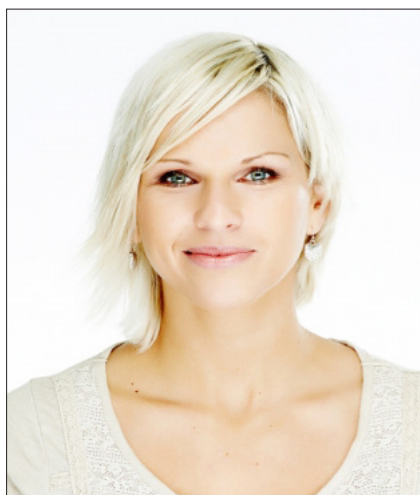
-60kg, -63½kg, -67kg, -71kg, -75kg, -81kg, -86kg, -91kg, +91kg
in each weight category:

1st place	CHAMPION BELT	+ PRIZE MONEY	1.500 €
2nd place	CUP	+ PRIZE MONEY	500 €
2×3rd place	MEDAL	+ PRIZE MONEY	100 €

WOMEN

-52kg, -56kg, -60kg, -65kg, -70kg, +70kg
in each weight category:

1st place	CHAMPION BELT	+ PRIZE MONEY	500 €
2nd place	CUP	+ PRIZE MONEY	200 €
2×3rd place	MEDAL		



Dear sport friends,

Please, let me invite you to our traditional championship, which is held in Prague. We trying to come every year with something new or better. This time we have again special prize money for the winner of each adult category.

I am pretty sure, that this make our competition more open for the fighters all around Europe and maybe world. Also as usual, we will have amateur belts for adults and trophy for juniors and cadets (only winners).

You can look forward to minimum 3 rings and good quality of referees. Average occupancy of men adults categories was around 15-20 fighters. This is main reason why we decide add one day extra to European cup. Adult's finals will be at gala show on Saturday 30th of September.

Be part of challenge new young blood and experienced fighters. I believe that we see each other in Prague.

Alena Hola
Tournament director



Dear sport friends,

It is my pleasure to invite you to Wako K1 European cup in Prague in 2017. Last year we had more than 300 participants and I fully hope that this year we are going to break this record.

This year, the tournament will be one day longer. I hope that this decision will help with regeneration of fighters for next fights. Prize money are 1500 EUR for winners.

I started my career as a kickboxing referee in 2002 and belive me, I have never seen better tournament regarding trophies and prize money for winners on all over the world. Quality of fighters, organization and other support for all participants is on high level and I fully hope that in future I will have the chance to welcome you on World Wako K1 cup.

Jan Frana
Czech WAKO Vice-president
WAKO IF Ring sports referee committee member

ARENA SPARTA

Podvinny Mlyn, Kovanecka 2405/27, Prague 9, Czech Republic

DAY	TIME START	TIME FINISH	PROGRAM	PARTICIPANTS
Wednesday, 27 September	14:00	15:30	Organisational meeting	Organizing committee
	16:00	22:00	Personal registration, weighing, medical check-ups	All contestants
Thursday, 28 September	08:00	12:00		
	12:00	15:00	International seminar of referees	All referees
	15:00	15:30	Control of drawing lots	All trainers
	15:30	16:00	Seminar of trainers	
	16:00	20:00	Elimination matches	
Friday, 29 September	10:00	20:00		
Saturday, 30 September	10:00	15:00	Semi-final matches of men and women Final matches of boys, girls and junior categories	Contestants, trainers, referees
	19:00	22:00	GALA EVENING Final matches of men and women + WAKO PRO fights	

CATEGORIES	AGE	KG								
Men	18+	-60	-63,5	-67	-71	-75	-81	-86	-91	+91
Women	18+	-52	-56	-60	-65	-70	+70			
Juniors male	16 – 18	-60	-63,5	-67	-71	-75	-81	-86	-91	+91
Juniors female	16 – 18	-48	-52	-56	-60	-65	-70	+70		
Cadets male	13 – 15	-42	-47	-52	-57	-63	-69	+69		
Cadets female	13 – 15	-42	-46	-50	-55	-60	-65	+65		

Every contestant can only start in one age category and one weight category

Men, Women

Born 28. 9. 1999 and older

18 years or older

Juniors

Born between 28. 9. 2001 – 29. 9. 1998

(If the contestant is 18 years, he or she can decide whether to start as a junior or adult)

16 - 18 years old

Cadets

Born between 28. 9. 2004 – 29. 9. 2001

13 - 15 years old

PARTICIPATING CONDITIONS

- Min age 13 years
- Sports ID card or personal ID card
- Medical certificate not older than 1 year
- Competitors under 18 years of age must have Parental Waiver and Consent form (Appendix 1)
- All competitors are responsible for their own accommodation and transportation to the tournament
- All competitors participate at their own risk and peril



MEN:

- 1st place: **CHAMPION BELT** + PRIZE MONEY **1 500 €**
- 2nd place: **CUP** + PRIZE MONEY **500 €**
- 3rd place: **MEDAL** + PRIZE MONEY **100 €**

WOMEN:

- 1st place: **CHAMPION BELT** + PRIZE MONEY **500 €**
- 2nd place: **CUP** + PRIZE MONEY **200 €**
- 3rd place: **MEDAL**

Juniors and Cadets (male and female):

- 1st place: **CUP + MOBILE PHONE**
- 2nd place: **MEDAL**
- 3rd place: **MEDAL**





MOBILE PHONE 

FOR ALL WINNERS OF CADETS AND JUNIORS CATEGORIES

LOGIK
E L E K T R O



**3× ACTION CAMERA SENCOR®
FOR THE FASTEST KNOCKOUT**

IN THE CATEGORIES OF CADETS, JUNIORS AND ADULTS

PRAGUE is the capital and largest city of the Czech Republic and fourteenth largest city in European Union. Situated in the north-west of the country on the Vltava river, the city is home to about 1.3 million people. The city has a temperate oceanic climate with warm summers and chilly winters.



Prague has been a political, cultural, and economic centre of central Europe with waxing and waning fortunes during its 1,100 year existence. Founded during the Romanesque and flourishing by the Gothic and Renaissance eras, Prague was the seat of two Holy Roman Emperors and thus then also the capital of the Holy Roman Empire. It was an important city to the Habsburg Monarchy and its Austro-Hungarian Empire and after World War I became the capital of Czechoslovakia. The city played major roles in the Protestant Reformation, the Thirty Years' War and in modern history generally as the principal conurbation in Bohemia and Moravia whose second city is Brno.



Prague is home to a number of famous cultural attractions, many of which survived the violence and destruction of twentieth century Europe. Main attractions include the following: Prague Castle, the Charles Bridge, Old Town Square, the Jewish Quarter, Petřín hill and many others. Since 1992, the extensive historic centre of Prague has been included in the UNESCO list of World Heritage Sites.

Prague boasts more than ten major museums, along with countless theatres, galleries, cinemas, and other historical exhibits. A modern public transportation system connects the city. Also, Prague is home to a wide range of public and private schools, including the famous Charles University. Prague is classified as a Beta+ global city according to GaWC studies, comparable to Berlin, Rome, or Houston. Its rich history makes it a popular tourist destination, and the city receives more than 4.1 million international visitors annually, as of 2009. In 2011, Prague was the sixth most visited city in Europe.

ARENA SPARTA

Podvinny Mlyn, Kovanecka 2405/27, Prague 9, Czech republic

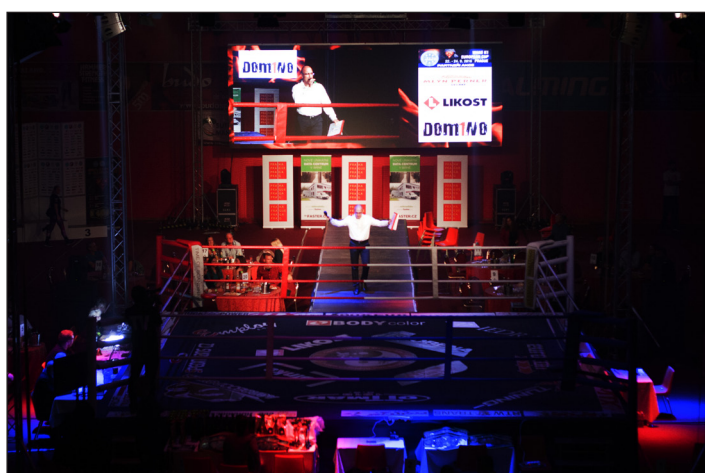
ARENA SPARTA, Podvinny Mlyn is the modern multipurpose venue for sports, culture, entertainment, exhibits in Prague 9 District, featuring the modern technology, universal usage, comfort and all-embracing services for spectators and visitors. Build up in the year 2008.



Part of the Arena Sparta is open car park, restaurant and café. Close to the public park and other open air sports facilities for athletics and soccer.

Situated on the public transportatin – tram and subway station. Various international hotels of all classes in the area.

Used for professional boxing, MMA and kickboxing shows (Heroes Gate, GCF MMA Events, Warriors Of The Ring...)



All competitors are responsible for their own accommodation and transportation to the tournament.

BOOKING:

BOOKING.COM

<http://www.booking.com/Prague-09-Hotely>

HOTEL.CZ

<http://www.hotel.cz/praha-9/accommodation/>

ACCOMMODATION NEARBY:

CLARION CONGRESS HOTEL ****

<http://www.clarionhotelpraguecity.com/en/>

WELLNESS HOTEL STEP ****

<http://www.wellness-hotel-step.cz/>

HOTEL OLYMPIK ****

<http://www.olympik.cz/en/olympik/>

HOTEL TRISTAR ***

<http://www.olympik.cz/en/tristar/>

PENZION PRAHA ***

<http://www.penzion-praha.com/en/>

UBYTOVANI BOHEMIA **

<http://www.ubytovanibohemia.cz/en/>

CONDUCT



ANTI-DOPING CONTROL

It is strictly forbidden to take any illegal stimulants that are against the rules of the WAKO Anti-doping regulations.

The WAKO will have anti-doping tests on randomly chosen winners. Each athlete found positive by the test will be sanctioned according to the WAKO General Rules Anti-doping regulations.

ARENA CONDUCT

ATHLETES WILL ABIDE BY WAKO RULES REGARDING ARENA CONDUCT. At all times coaches, team, opponents, and officials will be treated with the utmost respect. Coaches must also assume full responsibility for enforcing arena conduct rules. Teams that fail to abide by these rules are subject to disciplinary action (e.g., DISMISSAL FROM THE EVENT).

All participants in the Championship, athletes, coaches, chaperones and relatives are expected to abide by the above code of conduct. It is responsibility of every coach to review with their teams this Code of Conduct Individual and team violators of any provisions of this Code may be excluded from future participation in WAKO events. (The Tournament Director and Tournament committee will administer such disciplinary action).



CZECH FULLCONTACT UNION – The Promoter

Web: <http://k-1.cz>
Instagram: <https://www.instagram.com/csfu.cz>
Facebook: <https://facebook.com/mistrK1>
Twitter: <https://twitter.com/CSFuCZ>
E-mail: info@k-1.cz

ALENA HOLA – Tournament Director

E-mail: ajahola@email.cz
Tel: +420 792 302 480

JAN FRANA – Head Referee

E-mail: honzafrana@gmail.com
Tel: +420 604 394 049

All referees get in touch with the head referee before the tournament please

RESULTS AND PHOTO GALLERY:

2016: <http://2016.k-1.cz>
2015: <http://2015.k-1.cz>
2014: <http://2014.k-1.cz>
2013: <http://2013.k-1.cz>



CZECH FULLCONTACT UNION (WAKO Czech Republic)

CSFu is sports union with almost 220 member clubs and 6000 sportsmen. CSFu is part of Czech Union of Martial Arts and Czech Olympic Committee. CSFu, founded in 1992, is part of Czech Ministry of Education, Youth and Sports as the only kickboxing body in the country. Chairman of the CSFu is Mr. Jiri Mulac, member of the board is Mr. Jan Frana who is WAKO Czech Republic representative.



CZECH UNION OF MARTIAL ARTS

CUBU was founded in 1994 for the purpose of co-operation and mutual assistance, the development of the Combat, Contact Sports and Martial Arts of different styles in the Czech Republic. Czech Union of Martial Arts includes traditional martial arts (karate shotokan, goju ryu, kyokushinkai, taekwondo, wushu, kendo, sumo, shikon budo kai...), survival, self-defence, special police or army systems (sambo, krav maga...) and modern sports as MMA, kickboxing, sports karate, BJJ and others. Czech Union of Martial Arts is 4th biggest sports association in the Czech Republic with 42 000 sports members and various martial arts promoters of national and international events including kickboxing. Czech Union of Martial Arts is part of the Czech Olympic Committee and leading body of non olympic sports in the country.



WAKO K-1 EUROPEAN CUP

27. - 30. 9. 2017, Prague, Czech republic

As the parent or legal guardian of the child named below, I hereby give my full consent and approval for my child to participate at WAKO K-1 EUROPEAN CUP in the sport of kickboxing organized by the Czech Fullcontact Union.

I understand that there are certain risks of injury inherent in the practice and play of this sport, as well as in traveling and other related activities incidental to my child's participation, and I am willing to assume these risks on behalf of my child. I hereby certify that my child is fully capable of participating in the designated sport and that my child is healthy and has no physical or mental disabilities or infirmities that would restrict full participation in these activities.

In additional to giving my full consent for my child's participation, I do hereby waive release and hold harmless the organization – the Czech Fullcontact Union, it's officers, coaches, sponsors, supervisors and representatives for any injury that may be suffered by my child in the normal course of participation in the designated sport and the activities incidental thereto, whether the result of negligence or any other cause.

Name of Child:

Date of Birth:

Address:

State:

Travel Passport / ID Card N°:

.....
Date

.....
Parents Signature



Application for issue of a visa in the territory of the Czech Republic you will find on:

http://www.mzv.cz/jnp/en/information_for.aliens/visa_form/index.html

including frequently asked questions, general information, list of states whose citizens are required to have visa, list of the Czech Embassies and Consulates... The above mentioned page belongs to the Ministry of Foreign Affairs of the Czech Republic. Find out where is your nearest Czech Embassy or Consulate and ask for personal visit.

Federation / Club / Individual:	
Address:	
Nationality:	
Phone:	
E-mail:	

ONLY WAKO MEMBERS

List of persons willing to participate at the WAKO K-1 EUROPEAN CUP, Prague, Czech Republic

	Name & Surname	Passport No.	Date of expire	Date of birth	Sex	Status	Natio-nality
1							
2							
3							
4							
5							
6							
7							
8							
9							
10							
11							
12							
13							
14							
15							

PARTNERS



YANGAMES PROMOTION

BE **FASTER.CZ**



CASIO

**PEAKPOINT
PROMOTION**

REDTRANS
REDTRANS VÍC NEŽ DOPRAVA

**PROFI
ELEKTRO**

Touchdown
Executive Search

RSH spol. s.r.o.

Adargin[®]

LOGIK
E L E K T R O

SENCOR

AUTO 
ANEVA
www.autoaneva.cz

sp5rt


A-BENET

DVJ
Develop