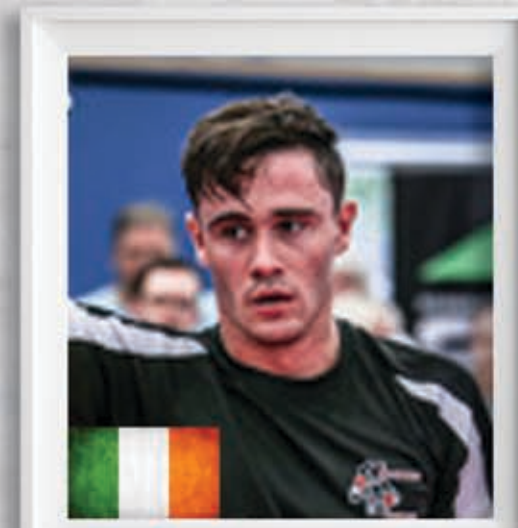


GRAND CHAMPION HALL OF FAME



DESSIE LEONARD IRELAND
Men's Grand Champion 2016



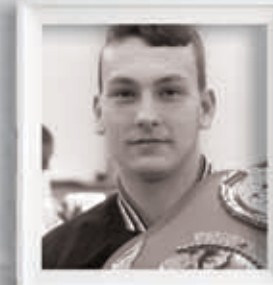
BEV STURZAKER UK
Women's Grand Champion 2009 - 2013, 2015, 2016



TAMÁS IMRE HUNGARY
Men's Grand Champion 2016



SHAUNA BANNON IRELAND
Women's Grand Champion 2014



RYAN MARLOW UK
Men's Grand Champion 2014



ROBBIE LAVOIE CANADA
Men's Grand Champion 2013



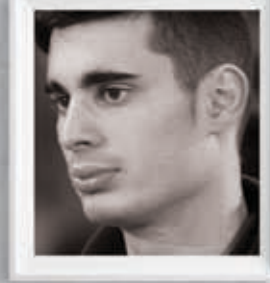
JADI TENTON USA
Men's Grand Champion 2012



GREGORIO DI LEO ITALY
Men's Grand Champion 2011



KRISZTIÁN JÁNOŠKIEWICZ HUNGARY
Men's Grand Champion 2010



ANGELOPOULOS ANDREAS GREECE
Men's Grand Champion 2009

BRISTOL OPEN

🕒 schedule

Saturday 14th
Weigh-in – Continuous fighters 9.00am
Weigh-in – Points fighters 9.00am – 5.00pm
All Continuous divisions start 11.00am
All Tag Teams start 1.00pm
Male & Female Grand Champion start 3.00pm
Night Show featuring finals 5.30pm

Sunday 15th
Weigh-in – Points fighters 9.00am
All Points divisions start 11.00am

🏠 venue

The City Academy
Bristol Sports Centre
Russell Town Avenue
Bristol
BS5 9JH

Tel: +44 (0) 117 954 2811
Fax: +44 (0) 117 954 2857
www.cityacademybristol.org



🕒 round times

Kids Continuous	2 x 1.5 mins
Adults Continuous	2 x 2 mins
Tag Team Points	1 x 3 mins
Kids Beginner/Intermediate Points	1 x 2 mins
Kids Advanced Points	1 x 3 mins (2 x 2 mins final)
Adults Beginner/Intermediate Points	1 x 2 mins (2 x 2 mins final)
Adults Advanced Points	2 x 2 mins
Adults Executive Points	1 x 3 mins (2 x 2 mins final)
Grand Champion Points	1 x 2 mins (2 x 2 mins final)

🚗 travel

By plane

Bristol Airport	20km
London Heathrow	165km
London Gatwick	220km
London Stansted	260km

By train

Bristol Temple Meads	2 miles
----------------------	---------

By car

- Head southwest on M32 towards Exit 2
- At junction 3, take the A4320 exit to Bath/A4
- At the roundabout, take the 1st exit onto Easton Way/A4320
- At the roundabout, take the 1st exit onto Lawrence Hill/A420
- Continue to follow A420
- Turn left onto Russell Town Avenue

💷 entry fees PRE-REGISTRATION ONLY!

	Before 11th Oct	Before 13th Oct	14th Oct
First division	£25.00	£30.00	-
Additional division	£20.00	£25.00	-
Kids Tag Team	£25.00	£30.00	-
Adults Tag Team	£30.00	£35.00	-
Grand Champion	£25.00	£30.00	-
1 day spectator	£ 8.00	£ 9.00	£10.00
2 day spectator	£12.00	£13.00	£15.00

✈ Bristol international flyer

- Bus from Bristol Airport to central bus station 15 min journey.
- 10 minute walk to Future Inn hotel (See Accommodation)
- 2 minutes walk to Premier Inn Hotel (See Accommodation)
- Cost £10 return adult / £7 return child (Under 16 years)
- Runs every 30 minutes to an hour from Airport
- http://flyer.bristolairport.co.uk/timetable_to_bia_mon_fri.php

🏠 accommodation

hotels

Future Inn Cabot Circus Hotel
Tel: +44 (0) 845 094 5588
www.futureinns.co.uk

The Clifton Hotel
Tel: +44 (0)117 973 6882

The Rodney Hotel
Tel: +44 (0)117 973 5422

The Washington
Tel: +44 (0)117 973 3980
www.cliftonhotels.com

Travelodge
Anchor Road or Central Mitchell Lane
Tel: +44 (0) 871 984 6223
www.travelodge.co.uk

Premier Inn
The Haymarket or Lewins Mead
Tel: +44 (0) 871 527 8156
www.premierinn.com

Holiday Inn
Filton
Tel: +44 (0) 871 942 9014
www.holidayinn.com

apartments

Alderman Apartments
Cabot Circus, Bristol
Tel: +44 (0) 844 822 5778
alderman-apartments.co.uk

PREMIER APARTMENTS
Premier Apartments
Cabot Circus, Bristol
Tel: +44 (0) 117 9544 800
premierapartmentsbristol.com

📞 contact details

Sean Veira +44 (0) 7850 715 961
Andy Cleeves +44 (0) 7590 682 683
Sharon Gill +44 (0) 7738 752 273

info@bristolopen.com
www.bristolopen.com

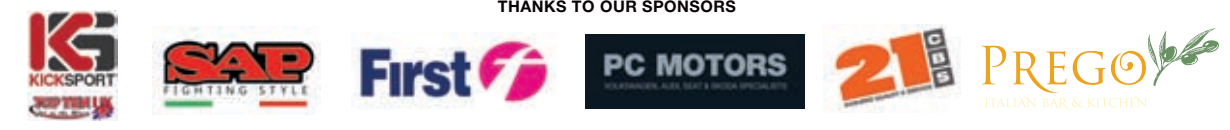
f t You Tube

register online now www.bristolopen.com
or at www.sportdata.org



BRISTOL OPEN 2017

14th & 15th OCTOBER
THE CITY ACADEMY | BRISTOL | UK



bristolopen.com f t You Tube



★ **Total Prize Money £6,500!**

★ **Kids Tag Team**

1st Place (all divisions)
£50.00

Prize money donated by Jaczy Cashman of the Tony Cashman Fund.

★ **Ladies**

Continuous, Points & Veterans
1st Place (all divisions)
£100.00

★ **Adult Tag Team**

1st Place (all divisions)
£200.00

★ **Junior Open Weight**

Boys and Girls 16-18 years.

1st Place 2nd Place
£100.00 £50.00

★ **Men**

Continuous, Points & Veterans
1st Place (all divisions)
£100.00

★ **Grand Champion**

1st Place 2nd Place
£600.00 £100.00
(all divisions)



Saturday 14th divisions

Kids Light Contact

Pee wee boys 9 years and under

1	- 25kg (M)
2	- 28kg (M)
3	- 32kg (M)
4	+32kg (M)

Pee wee girls 9 years and under

5	- 25kg (M)
6	- 28kg (M)
7	+28kg (M)

Boys 10-16 years mixed grade

8	- 28kg (M)
9	- 32kg (M)
10	- 37kg (M)
11	- 42kg (M)
12	- 47kg (M)
13	- 52kg (M)
14	- 57kg (M)
15	+57kg (M)

Girls 10-16 years mixed grade

16	- 30kg (M)
17	- 37kg (M)
18	- 45kg (M)
19	- 50kg (M)
20	- 55kg (M)
21	+55kg (M)

Junior Open Weight

16-18 years

29	Girls Open Weight
30	Boys Open Weight

Ladies Continuous

31	- 55kg (B/I)
32	- 65kg (B/I)
33	+65kg (B/I)
34	- 55kg (A)
35	- 60kg (A)
36	- 65kg (A)
37	+65kg (A)

Mens Continuous

38	- 69kg (B/I)
39	- 79kg (B/I)
40	+79kg (B/I)
41	- 63kg (A)
42	- 69kg (A)
43	- 74kg (A)
44	- 79kg (A)
45	- 84kg (A)
46	+84kg (A)

Adult Tag Team

2 per team / mixed ability

47	Ladies (M)
48	Men -74kg (M)
49	Men +74kg (M)

Grand Champion

50	Ladies Open Weight
51	Mens Open Weight

Kids Tag Teams

NEW SECTIONS!

9 years and under	10, 11 and 12 years old	13, 14 and 15 years old	16, 17 and 18 years old
22 Mixed gender	23 Boys 24 Girls	25 Boys 26 Girls	27 Boys 28 Girls

All Kids Tag Teams (M)

Sunday 15th divisions

Kids Points

Boys 10-15 years Beginners

59	- 30kg (B)
60	- 37kg (B)
61	- 45kg (B)
62	- 52kg (B)
63	- 57kg (B)
64	+57kg (B)

Advanced

65	- 28kg (A)
66	- 32kg (A)
67	- 37kg (A)
68	- 42kg (A)
69	- 47kg (A)
70	- 52kg (A)
71	- 57kg (A)
72	+57kg (A)

Pee wee boys 9 years and under

52	- 25kg (M)
53	- 28kg (M)
54	- 32kg (M)
55	+32kg (M)

Girls 10-15 years Beginners

73	- 30kg (B)
74	- 37kg (B)
75	- 45kg (B)
76	- 50kg (B)
77	+50kg (B)

Advanced

78	- 30kg (A)
79	- 37kg (A)
80	- 45kg (A)
81	- 50kg (A)
82	- 55kg (A)
83	+55kg (A)

Pee wee girls 9 years and under

56	- 25kg (M)
57	- 28kg (M)
58	+28kg (M)

Boys 16-18 years Beginners

84	- 63kg (B)
85	+63kg (B)
86	- 63kg (A)
87	- 69kg (A)
88	- 74kg (A)

Advanced

89	- 55kg (B)
90	+55kg (B)
91	- 55kg (B)
92	- 60kg (B)
93	+60kg (B)

Ladies Points

94	- 60kg (B)
95	+60kg (B)
96	- 60kg (I)
97	+60kg (I)
98	- 50kg (A)
99	- 55kg (A)
100	- 60kg (A)
101	- 65kg (A)
102	- 70kg (A)
103	+70kg (A)

Mens Points

104	- 74kg (B)
105	+74kg (B)
106	- 74kg (I)
107	+74kg (I)
108	- 63kg (A)
109	- 69kg (A)
110	- 74kg (A)
111	- 79kg (A)
112	- 84kg (A)
113	- 89kg (A)
114	+89kg (A)

Masters

Points / +35 years	Mixed ability
115 Ladies – open weight	116 Men - 74kg 117 Men +74kg

KEY

(M) Mixed ability
(B) Beginner
(B/I) Beginner/Intermediate
(I) Intermediate
(A) Advanced

Kids Beginner = novice up to and including 4th grade with no more than two years competition experience.
Kids Advanced = 5th grade upwards.
Adults Beginner = novice up to and including 3rd grade.
Adults Intermediate = 4th grade to pre brown/black.
Adults Advanced = brown/black.

PLEASE NOTE: Proof of age and grade may be requested.



★ **Over 100 fighting divisions**

- ★ State-of-the-art arena with easy access
- ★ Saturday night show with Open Weight finals
- ★ Bespoke awards and limited edition t-shirts
- ★ Championship title belts for Grand Champions

