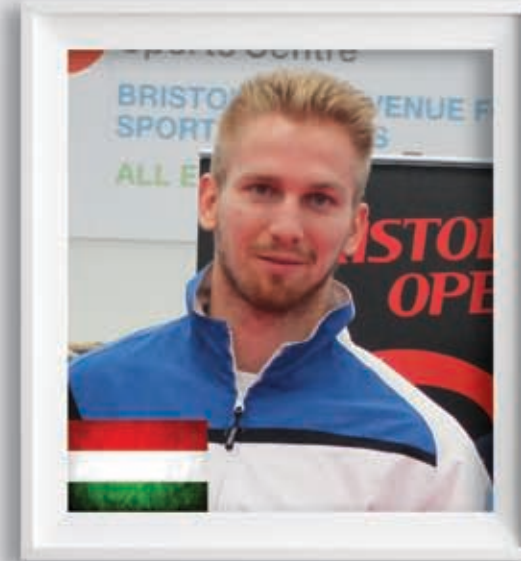


GRAND CHAMPION HALL OF FAME



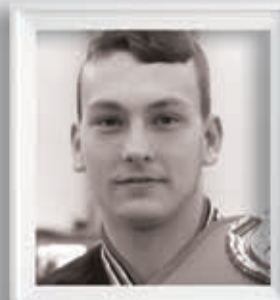
TAMÁS IMRE
HUNGARY
Men's Grand Champion 2015



BEV STURZAKER
UK
Women's Grand Champion 2015
and 2009 - 2013



SHAUNA BANNON IRELAND
Women's Grand Champion 2014



RYAN MARLOW UK
Men's Grand Champion 2014



ROBBIE LAVOIE CANADA
Men's Grand Champion 2013



ROBBIE LAVOIE CANADA
Men's Grand Champion 2013



GREGORIO DI LEO ITALY
Men's Grand Champion 2011



JADI TENTION USA
Men's Grand Champion 2012



ANGELOPOULOS ANDREAS
GREECE
Men's Grand Champion 2009



KRISZTIAN JAROSZKIEWICZ HUNGARY
Men's Grand Champion 2010

BRISTOL OPEN

🕒 schedule

Saturday 10th
Weigh-in - Continuous fighters 9.00am
Weigh-in - Points fighters 9.00am - 5.00pm
All Continuous divisions start 11.00am
All Tag Teams start 1.00pm
Male & Female Grand Champion start 3.00pm
Night Show featuring finals 5.30pm

Sunday 11th
Weigh-in - Points fighters 9.00am
All Points divisions start 11.00am

🏠 venue

The City Academy
Bristol Sports Centre
Russell Town Avenue
Bristol
BS5 9JH

Tel: +44 (0) 117 954 2811
Fax: +44 (0) 117 954 2857
www.cityacademybristol.org



🕒 round times

Kids Continuous 2 x 1.5 minutes
Adults Continuous 2 x 2 minutes
Tag Teams Points 1 x 3 minutes
Kids Beginner/Intermediate Points 1 x 2 minutes
Kids Advanced Points 1 x 3 minutes
Adults Beginner/Intermediate Points 1 x 2 minutes
Adults Advanced Points 2 x 2 minutes
Adults Executive Points 1 x 2 minutes
Grand Champion Points 1 x 2 minutes
(Final - 2 x 2 minutes)

£ entry fees

Pre-Registration
1 day spectator £7
2 day spectator £10
First division £20
Additional division £15
Kids Tag Team £20
Adult Tag Team £20
Grand Champion £20

PLEASE NOTE

All fees collected on day

Cost on day
or £10 on the day
or £15 on the day
or £25 on the day
or £20 on the day
or £25 on the day
or £25 on the day
or £25 on the day

🚗 travel

By plane
Bristol Airport 20km
London Heathrow 165km
London Gatwick 220km
London Stansted 260km

By train
Bristol Temple Meads 2 miles

By car
• Head southwest on M32 towards Exit 2
• At junction 3, take the A4320 exit to Bath/A4
• At the roundabout, take the 1st exit onto Easton Way/A4320
• At the roundabout, take the 1st exit onto Lawrence Hill/A420
• Continue to follow A420
• Turn left onto Russell Town Avenue

Bristol international flyer
• Bus from Bristol Airport to central bus station 15 min journey.
• 10 minute walk to Future Inn hotel (See Accommodation)
• 2 minutes walk to Premier Inn Hotel (See Accommodation)
• Cost £10 return adult / £7 return child (Under 16 years)
• Runs every 30 minutes to an hour from Airport
• http://flyer.bristolairport.co.uk/timetable_to_bia_mon_fri.php.

🏠 accommodation

hotels



Future Inn
Cabot Circus Hotel
Bond Street South, Bristol BS1 3EN

Reservations.bristol@futureinns.co.uk
Quote: "Bristol Open"

Double or Single Room £110 per night based on allocation of 20 rooms for Bristol Open. Once all allocated rooms have been booked, price per room will become 'Best Available'.



Anchor Road
or
Central Mitchell Lane
Tel: +44 (0) 871 984 6223
www.travelodge.co.uk



The Haymarket
or
Lewins Mead
Tel: +44 (0) 871 527 8156
www.premierinn.com



Filton
Tel: +44 (0) 871 942 9014
www.holidayinn.com



The Clifton Hotel
Tel: +44 (0)117 973 6882

The Rodney Hotel
Tel: +44 (0)117 973 5422

The Washington
Tel: +44 (0)117 973 3980
www.cliftonhotels.com

apartments



Alderman Apartments
Cabot Circus, Bristol
Tel: +44 (0) 844 822 5778
alderman-apartments.co.uk
From £90 per night*



Premier Apartments
Cabot Circus, Bristol
Tel: +44 (0) 117 9544 800
premierapartmentsbristol.com
From £90 per night*

contact details

Sean Veira +44 (0) 7850 715 961
Andy Cleeves +44 (0) 7590 682 683
Sharon Gill +44 (0) 7738 752 273

info@bristolopen.com
www.bristolopen.com



register online now www.bristolopen.com
or at www.sportdata.org



BRISTOL OPEN 2016

15th & 16th OCTOBER
THE CITY ACADEMY | BRISTOL | UK

bristolopen.com f t You Tube



Saturday 15th

Kids Light Contact **NEW SECTIONS!**

| | | |
|---|--|---|
| Pee wee boys 9 years and under | Boys 10-16 years mixed grade | Girls 10-16 years mixed grade |
| 1 - 25kg (M) | 8 - 28kg (M) | 16 - 30kg (M) |
| 2 - 28kg (M) | 9 - 32kg (M) | 17 - 37kg (M) |
| 3 - 32kg (M) | 10 - 37kg (M) | 18 - 45kg (M) |
| 4 +32kg (M) | 11 - 42kg (M) | 19 - 50kg (M) |
| Pee wee girls 9 years and under | 12 - 47kg (M) | 20 - 55kg (M) |
| 5 - 25kg (M) | 13 - 52kg (M) | 21 +55kg (M) |
| 6 - 28kg (M) | 14 - 57kg (M) | |
| 7 +28kg (M) | 15 +57kg (M) | |

Kids Tag Team

2 per team / mixed gender

| |
|----------------------------|
| 22 9 years and under (M) |
| 23 10, 11 and 12 years (M) |
| 24 13, 14 and 15 years (M) |
| 25 16, 17 and 18 years (M) |

Junior Open Weight

16-18 years

| |
|----------------------|
| 26 Girls Open Weight |
| 27 Boys Open Weight |

PLEASE NOTE: Proof of age and grade may be requested.

Ladies Continuous

| |
|-----------------|
| 28 - 55kg (B/I) |
| 29 - 65kg (B/I) |
| 30 +65kg (B/I) |
| 31 - 55kg (A) |
| 32 - 60kg (A) |
| 33 - 65kg (A) |
| 34 +65kg (A) |

Mens Continuous

| |
|-----------------|
| 35 - 69kg (B/I) |
| 36 - 79kg (B/I) |
| 37 +79kg (B/I) |
| 38 - 63kg (A) |
| 39 - 69kg (A) |
| 40 - 74kg (A) |
| 41 - 79kg (A) |
| 42 - 84kg (A) |
| 43 +84kg (A) |

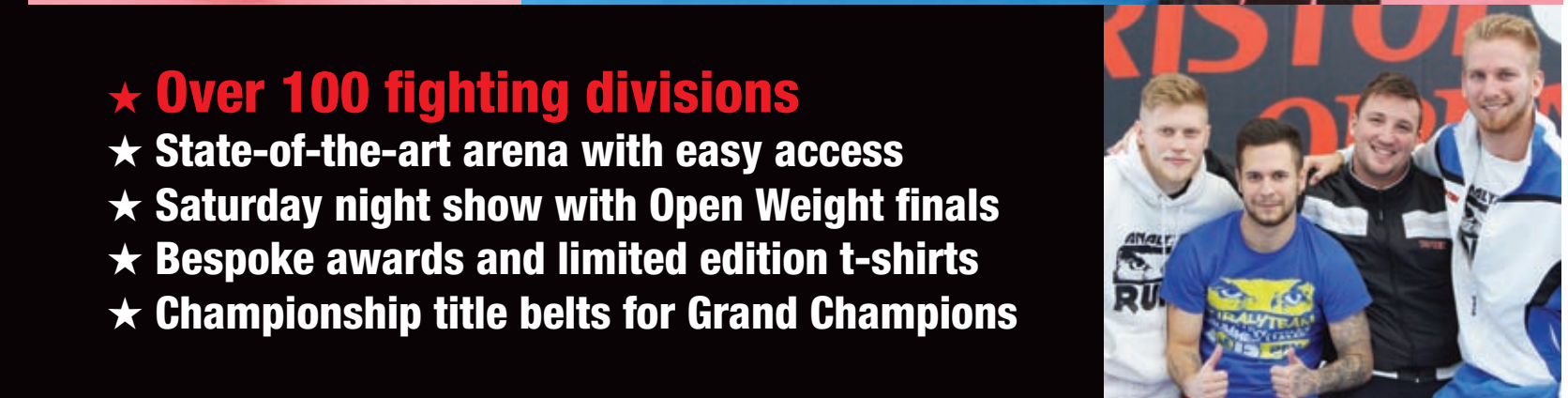
Adult Tag Team

2 per team / mixed ability

| |
|------------------|
| 44 Ladies (M) |
| 45 Men -74kg (M) |
| 46 Men +74kg (M) |

Grand Champion

| |
|-----------------------|
| 47 Ladies Open Weight |
| 48 Mens Open Weight |



- ★ **Over 100 fighting divisions**
- ★ **State-of-the-art arena with easy access**
- ★ **Saturday night show with Open Weight finals**
- ★ **Bespoke awards and limited edition t-shirts**
- ★ **Championship title belts for Grand Champions**

★ **Total Prize Money £6,500!**

★ **Kids Tag Team**
1st Place (all divisions)
£50.00
Prize money donated by Jaczy Cashman of the Tony Cashman Fund.

★ **Junior Open Weight**
Boys and Girls 16-18 years.
1st Place 2nd Place
£100.00 £50.00

★ **Ladies**
Continuous, Points & Veterans
1st Place (all divisions)
£100.00

★ **Men**
Continuous, Points & Veterans
1st Place (all divisions)
£100.00

★ **Adult Tag Team**
1st Place (all divisions)
£200.00

★ **Grand Champion**
1st Place 2nd Place
£600.00 £100.00
(all divisions)

Sunday 16th

Kids Points **NEW SECTIONS!**

| | |
|--|---|
| Pee wee boys 9 years and under | Pee wee girls 9 years and under |
| 49 - 25kg (M) | 53 - 25kg (M) |
| 50 - 28kg (M) | 54 - 28kg (M) |
| 51 - 32kg (M) | 55 +28kg (M) |
| 52 +32kg (M) | |

| | | |
|--------------------------------------|---------------------------------------|---------------------------------------|
| Boys 10-15 years Beginners | Girls 10-15 years Beginners | Boys 16-18 years Beginners |
| 56 - 30kg (B) | 70 - 30kg (B) | 81 - 63kg (B) |
| 57 - 37kg (B) | 71 - 37kg (B) | 82 +63kg (B) |
| 58 - 45kg (B) | 72 - 45kg (B) | Advanced |
| 59 - 52kg (B) | 73 - 50kg (B) | 83 - 63kg (A) |
| 60 - 57kg (B) | 74 +50kg (B) | 84 - 69kg (A) |
| 61 +57kg (B) | Advanced | 85 - 74kg (A) |
| Advanced | 75 - 30kg (A) | Girls 16-18 years Beginners |
| 62 - 28kg (A) | 76 - 37kg (A) | 86 - 55kg (B) |
| 63 - 32kg (A) | 77 - 45kg (A) | 87 +55kg (B) |
| 64 - 37kg (A) | 78 - 50kg (A) | Advanced |
| 65 - 42kg (A) | 79 - 55kg (A) | 88 - 55kg (B) |
| 66 - 47kg (A) | 80 +55kg (A) | 89 - 60kg (B) |
| 67 - 52kg (A) | | 90 +60kg (B) |
| 68 - 57kg (A) | | |
| 69 +57kg (A) | | |

Ladies Points

| |
|---------------|
| 91 - 60kg (B) |
| 92 +60kg (B) |
| 93 - 60kg (I) |
| 94 +60kg (I) |
| 95 - 50kg (A) |
| 96 - 55kg (A) |
| 97 - 60kg (A) |
| 98 - 65kg (A) |
| 99 - 70kg (A) |
| 100 +70kg (A) |

Mens Points

| |
|----------------|
| 101 - 74kg (B) |
| 102 +74kg (B) |
| 103 - 74kg (I) |
| 104 +74kg (I) |
| 105 - 63kg (A) |
| 106 - 69kg (A) |
| 107 - 74kg (A) |
| 108 - 79kg (A) |
| 109 - 84kg (A) |
| 110 - 89kg (A) |
| 111 +89kg (A) |

Ladies Veterans

Points / +35 years

| |
|-----------------|
| 112 Open Weight |
|-----------------|

Mens Veterans

Points / +35 years

| |
|----------------|
| 113 - 74kg (M) |
| 114 +74kg (M) |

KEY
(M) Mixed ability
(B) Beginner
(B/I) Beginner/Intermediate
(I) Intermediate
(A) Advanced

Kids Beginner = novice up to and including 4th grade with no more than two years competition experience.
Kids Advanced = 5th grade upwards.

Adults Beginner = novice up to and including 3rd grade.
Adults Intermediate = 4th grade to pre brown/black.
Adults Advanced = brown/black.

